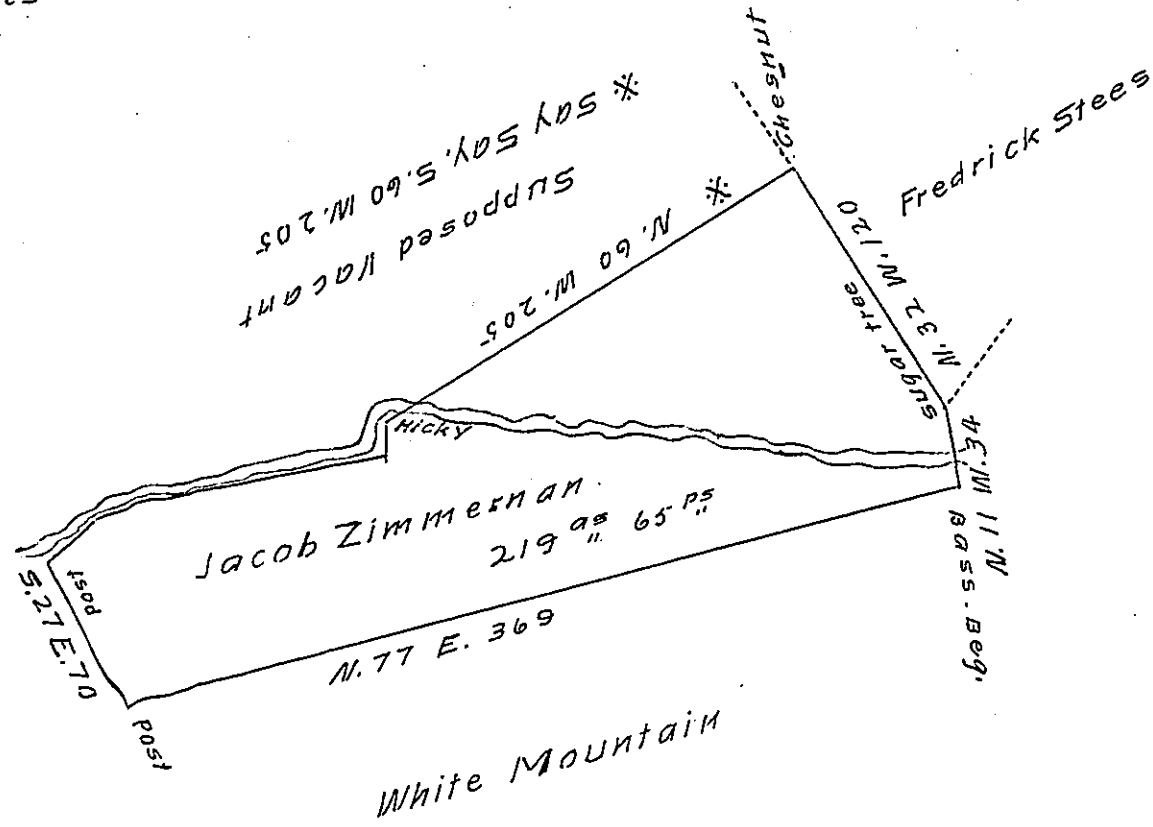


FORM NO. 1.

Courses & distances  
Up Penns Creek  
South 15  
5.81 W. 110  
5.68 W. 16  
5.55 W. 26



The Draught of a tract of Land in Haines Township Centre County containing two hundred and nineteen Acres, sixty five perches and allowance of six per Cent &c Surveyed the 10<sup>th</sup> & 11<sup>th</sup> days of November 1814, in pursuance of a warrant granted to Jacob Zimmerman dated the 7<sup>th</sup> day of September 1814.

Wm. Kerr D.S.

To Richard T. Leech Esquire }  
Surveyor General of Pennsylvania }

IN TESTIMONY that the above is a copy of the original remaining on file in the Department of Internal Affairs of Pennsylvania, made conformably to an Act of Assembly approved the 16th day of February 1833, I have hereunto set my hand and caused the Seal of said Department to be affixed at Harrisburg, this 11<sup>th</sup> day of Nov. 1907

Henry Houck  
Secretary of Internal Affairs.